

Kings Worthy Parish Council

Annual Parish Meeting

Minutes of the Meeting held on Wednesday 11 May 2016 at the Kings Worthy Community Centre, Fraser Road, Kings Worthy

Present:

Chair of the meeting: Stewart Newell (Chairman)

Councillors: Bob Barnes Ian Gordon
Mandy Hallisey Karen McCleery
Noel McCleery Judith Steventon Baker
Martin Taylor Denis Welstead

Winchester City Council: Malcolm Prince
Jane Rutter

Hampshire County Council: None

Clerks: Adrian Reeves
Christopher Read

Public & representatives: 10

AP/16/01 Chairman's Welcome to Parishioners and Guests

Cllr Stewart Newell welcomed everyone to the meeting.

AP/16/02 Apologies for Absence

Apologies had been received from Cllrs Haswell, Hudson and White.

AP/16/03 Minutes for the Meeting held on the 11 May 2015

The minutes were signed as a true record of the meeting.

AP/16/04 Parish Council Chairman's Report

Cllr Newell's report is attached at Appendix A, to which he added:

- The Parish Council currently has a deliberate policy to reduce its reserves
- There are problems with the Community Infrastructure Levy (CIL) where the system for accessing the funds is not clear, and developers may be looking to play the system

APM/16/05 To receive report from City Councillors

On behalf of the new city councillors, Cllr Rutter thanked the members of the Parish Council. Thanks were also given to Ex-Councillor Robert Johnston for all the work he had done on behalf of Kings Worthy.

Councillor Rutter's report is attached at Appendix B.

APM/16/06 To receive report from County Councillor

Cllr Porter (HCC) was not present but had sent a written report, copy attached at Appendix C.

APM/16/07 To receive reports from Parish Council Committee Chairmen

Recreation & Amenities – Cllr Bob Barnes

Cllr Barnes presented a report, attached at Appendix D.

Finance – Cllr Martin Taylor

Cllr Taylor presented a report, attached at Appendix D.

Planning & Highways – Ian Gordon

Cllr Barnes presented a report, attached at Appendix D.

Work is currently underway on the Cart & Horses junction which Hampshire County Council will believe will reduce the number of accidents. Once this is completed a review of the speed limits will be undertaken.

APM/16/08 Public Question Time

A parishioner mentioned that the new ballast on the railway line. The Parish Council will take this up with Network Rail.

APM/16/08 Next Meeting

Monday 8 May 2017 (to be confirmed)

Cllr Newell thanked Geoffrey Brown, the new caretaker, and everyone for attending.

The meeting closed at 21:07.

Signed

Date

Kings Worthy Parish Council
Annual Parish Meeting

Welcome

My Thanks

- All P.C. Members
- Committee Chairs
- City and County Councillors
- Our Contractors
- Our Clerks

2015-16

- Busy Year
- Several Completed Projects
- Major Planning Issues
- Completed New Lease for Tubbs Hall

Challenges

- Local Plan
- Planning Appeal
- Finance

Appendix B

City Councillors' Report to the Kings Worthy Parish Council Annual Meeting

8pm Wednesday 11th May 2016

ELECTION RESULT:

Firstly, many thanks to the many people throughout the new Worthys ward (which now comprises Kings Worthy, Abbots Worthy, Headbourne Worthy and Worthy Down) for putting their trust in us in such an emphatic way. We are touched and delighted and humbled in equal measure, and will do our very best to represent the whole community with enthusiasm and vigour.

We would like to thank retiring City Councillor Robert Johnston for his many years of service to the community. Whilst we have not always seen eye to eye on every issue, he has faithfully represented this parish over the years, always doing what he thought was right for the whole community and never afraid to vote with his conscience. He has helped many individuals and organisations over the years, and we thank him for his faithful service as a City Councillor.

NEW COUNCIL:

Following the Boundary Commission review, and last week's whole council election, the new 'slimline' council is made up of 45 councillors, 25 Conservative and 20 Liberal Democrat. There are many important and challenging issues facing the new council: devolution, significant development schemes in the district (Silver Hill which will have to start effectively from scratch, Station Approach which is down to two competing final designs, and the new leisure centre planned for Bar End), and the general challenge of making the new council much more responsive to public views whilst providing for the less well off in society and responding to the ever-changing demands of central government. We will be challenging the Conservative administration to 'beef up' the Council's scrutiny process, and consider again ways of involving 'back bench' members more in the decision-making and scrutiny processes.

WORKING WITH THE PARISH COUNCIL:

We are proud that we as individuals, and as County and City councillors, have worked closely with the Parish Council over the years to support it in various campaigns and to encourage it to take on issues that matter to local people. We look forward to continuing to work in close partnership with the Parish Council on the issues that affect and interest our community and local people.

Please do approach any or all of us if there are any particular issues which you wish us to comment on or take further in the course of our work as your representatives on Winchester City Council.

MAYOR OF WINCHESTER:

Jane is proud and delighted to be the Mayor-elect of Winchester. She will formally take on the mantle (should that be robes?!) of the Mayor at the Council's AGM on Wednesday 18th May. She is keen to involve local people as much as possible with the Mayoralty. Please do let her know if your organisation would like either a visit from the Mayor or would like to arrange a visit to Abbey House,

the official residence of the Mayor of Winchester. The WI is already committed to hosting a Mayor's 'at home' in Abbey House in October.

An exciting programme of fund-raising events for the Mayor's Charities has been organised and will be made public following the 18th May. Jane is pleased to invite you all to support these events, which will range from a teddy bears' picnic in Abbey Gardens on 19th June to a golf supper at the Winchester Golf Academy in Headbourne Worthy on 16th July, to a concert at St John's Church in Alresford featuring organist Thomas Trotter and our own Roger Owens at the piano performing an exciting programme of organ and piano duets, on Saturday 15th October. Details of these and all other events, and the charities chosen, will be on the Mayor of Winchester's website from 19th May – www.mayorofwinchesterscharities.co.uk

Jackie Porter, Malcolm Prince and Jane Rutter 9.5.16

Appendix C

County Councillor Jackie Porter's Annual Report for the Itchen Valley Division to April 2016

As with so many things in life, progress on a number of fronts is slow but hopefully steady!

During the year, I have been involved with a number of children's issues at the County level in my role as the Liberal Democrat Spokesperson for children:

- Home schooling
- The support of families who have poorly children, including a 'refresher visit' to Naomi House
- The support of families in the Children and Adolescent Mental Health Service (CAMHS)
- School transport to Henry Beaufort, and working with officers and the school on the future spending of £3.5m on the school.
- Pre school provision for two year olds across the county, looking at the 30hr free pilot offer at HCC
- Special needs for children just about to start in the school system, and going into KS3
- New places in Winchester schools for our growing population of children, including the Barton Farm Academy, sponsored by the University of



Winchester

- Trying to protect voluntary support for mothers who need help with breastfeeding and Health Visiting services in the Winchester, Andover, Whitchurch and Overton areas.
- Challenging principle of children's centre closures (final decision will be in May 2016)

Roads and Highways

2016-2017 is the last year of a budget for minor works and I am pleased that yet again, more than my 'fair share' of schemes was agreed!

I am pleased that we managed to persuade Network Rail to rebuild the Down Farm Railway bridge to the lower height again. This has a definite effect on traffic movements through the village, particularly when the A34 is busy. The Cart and Horses junction work is in progress as we speak!

Lorries through narrow roads are a real problem in this area and I urge you to use your Lengthsman to ensure local signage is clear, clean and pointing in the right direction! If you think you need new or more signs- please say so!

The flooding issue has subsided, but I am determined that I will not let it go away until the reasonable concerns of your community can be allayed.

I have had meetings with officers who are working on ‘oven ready feasibility schemes’ for each floodplain/catchment. There is no doubt that Sutton Scotney, the Worthys and Littleton have problems which need major infrastructure underground as well as a local flood plan for residents. My aim is to see that built.

I continue to urge residents to write ‘Impact statements’ (with photos attached if possible) to show the impact on their daily life and long term financial planning if they were affected by the flooding. This will be useful for use by HCC in any bid to Government. The impact of Barton Farm on flooding is currently being considered- I will be involved in the planning of the SUDS (sustainable urban drainage system) so that hopefully, it will not be a problem for current residents.



Planning that goes through HCC (energy, infrastructure, non domestic)

During the year, I have represented the public’s views at a number of planning issues, most recently the Asphalt Plant at Micheldever Station. We didn’t manage to stop it, but did secure a temporary permission. If it doesn’t cause problems, it will stay-but if it does, it cannot stay. This is a better result than we could have hoped for, given the wording of the local Minerals and Waste plan.



The Watercress Way

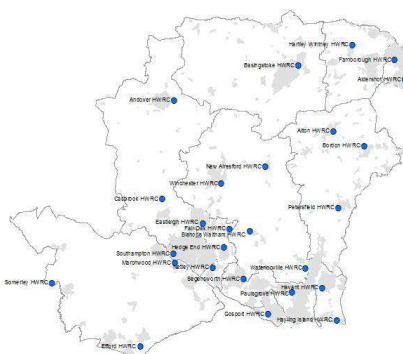
This year, a small team has formed a new charity ‘The Watercress Way’ to celebrate and develop routes for walking and cycling on the old railway lines in this area. We have been pleased to welcome residents from Wonston, Kings Worthy, Itchen Valley and Alresford Parishes onto the Trustees. Sue Bell led a fundraising walk- finishing at the Wonston



Arms! You can see more details of the charity on the website.

www.thewatercressway.org.uk

Tips, Libraries and Bus services: services we all expect, are under pressure from cuts as the grant from Government drops drastically year by year, even though the Hampshire County Council Tax is increasing by 3.99% for 2016-17.



Andover Library is due for a make-over but the mobile library may stop completely, this is still to be confirmed.

Recycling centres are under threat from cuts to hours, cutting out days open. (map shows current HWRC's)

Smaller Recycling Centres may even close completely. Please don't hesitate: respond directly to the consultation www.hants.gov.uk/hwrc2016 by 25th May. Thank you.

We had hoped to see bus service improvements as Barton Farm comes on stream, but at present, the failure of CALA to get started puts this further away. The school and the 800 homes affordable homes are 'on hold' too. Affordable housing *has* to be an integral part of any new development.

It is a good thing that so many parishes are trying very hard to introduce new affordable housing in their villages- and your Parish Council must be congratulated for this.



I have met with residents concerned by the 'Pay to Stay if you earn £30K' proposal from Government. Because the market rents of private housing in this area are so high, this proposal would put local families renting at risk of debt or even eviction, and is a plan which will have further reaching issues for our communities than even the 'bedroom tax'.

Selling off larger council homes and the right to buy on all affordable homes (not just council ones) will add to the pressures for families on lower incomes in our community.

Finally: Broadband is much better for some, but with poor prospects for others. Still no plans for the last 4% of our population. I have offered-and led- meetings with BT, HCC and individual communities on many occasions, but Gigabeam, a new start up company offering wireless broadband relayed from the Clarendon Police mast, has provided the most help to rural communities. I urge you to get in touch if this affects you!

You can contact me by email: Jackie@jackieporter.co.uk, by text 07973 696 085, on twitter @JackieLibDem or by phone 01962791054 - or by letter of course! The Down House, Itchen Abbas, Winchester SO21 1AX

Appendix D

Recreation and Amenities



Church Green Playground



Hinton Park Community Orchard



Before
In progress

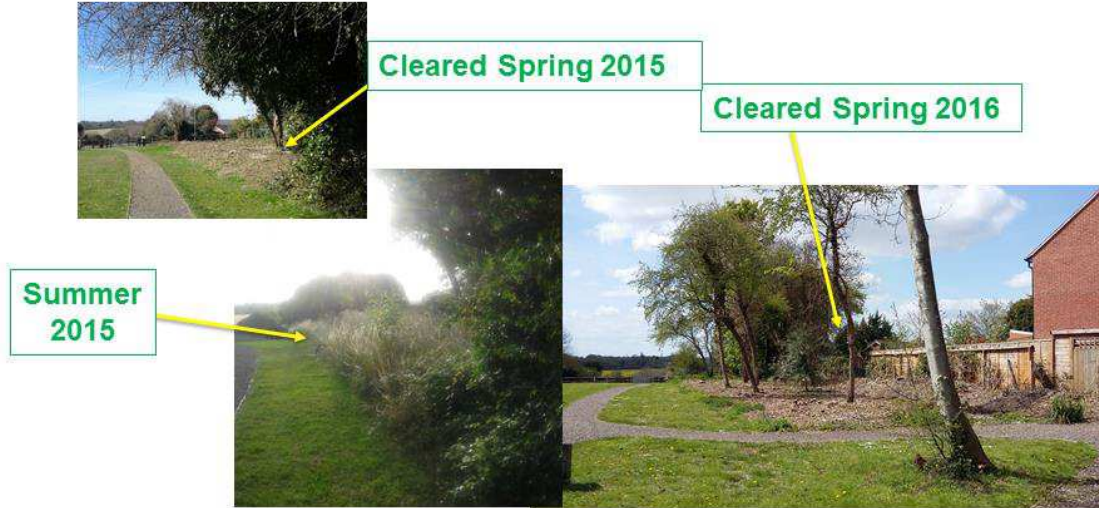


Help from
Sparsholt
College and
Kings
Worthy
Primary
students

Starting to flower



Upper Broadview



Lower Broadview



Burial Ground



Fryers Close Play Area



Eversley Carpark



Upcoming Projects

Burial Ground gates repaint



Footpaths (Cycle Paths?)

This hedge to be cut right back (KWPS and HCC)

This hedge to be removed



Enlarged Park



Finance, Administration & Remuneration



Where our income came from

❑ Total Income:

£134,713 , £3204 above budget
(exc. S106 funding)

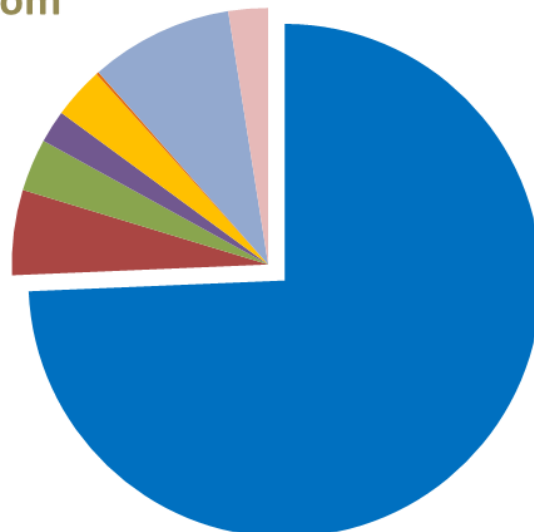
❑ Sources of Income:

Precept & council tax support grant represents 79.7% (121,705)
S106 Funding = 9% (13355)
Other income= £16,704

❑ Budget for 2016/17

Budgeted Income planned to increase to £132,113.

Kings Worthy Parish Council has not increased the precept for 2016-17, which has resulted in a small decrease, per household.



- Precept
- Council Tax Support Grant
- Burial Ground
- Fees (Grounds/Room)
- Tubbs Hall Mngmt
- Website
- S106 Funding
- Other

Where our funds were spent

❑ Total Expenditure:

£151,963 with a £9,187 overspend based on budget.

❑ Income over Expenditure

For 2015/16 a there was a deficit of £16,328 (against a planned deficit of £11267; i.e. an Overspend of £5061)

This was due to a planned overspend to start reducing our reserves to the recommended level.

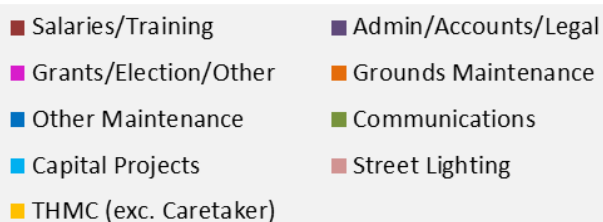
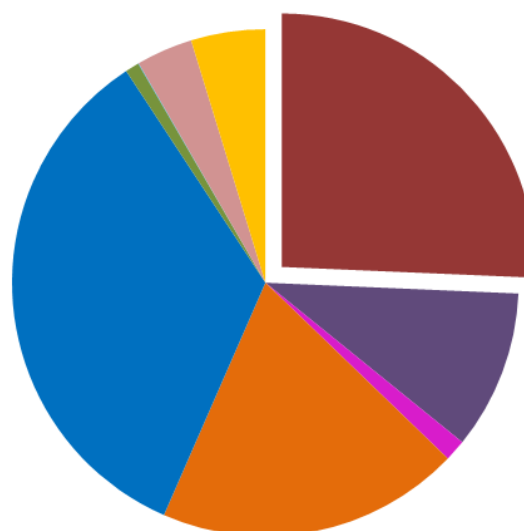
❑ Major Savings made in 2015-16

Streetlights (and External Audit fee!)
Trees

❑ Budget 2016/17

Expenditure is planned to increase to £169,355. This is to further reduce our reserves to the recommended level.

Most of the increase is down to an increase in the R&A project fund.



Grants awarded in 2015-16

Grants awarded		
Citizens Advice Bureau	Contribution to ongoing costs of running the service	£ 800.00
PCC of Kings Worthy	Church Fete 2016 (minus £50 deposit)	£ 450.00
PCC of Kings Worthy	Church Fete 2015	£ 375.00
Worthys Conservation Volunteers	Costs of insurance renewal	£ 300.00
Tubbies Playgroup	Cost of supplies, flask, updated books and toys	£ 120.00
Tubbs Hall Management Committee	Kings Worthy Christmas	£ 100.00
Kings Worthy Pre School	Good Life gift vouchers for competition prize	£ 20.00
Grants agreed but to be paid after event		
Jubilee Hall Management Committee	Contribution to costs toilet refurbishment (Up to £1000.00)	£1,000.00
PCC of Kings Worthy	Church Fete 2016 - Deposit	£ 50.00
Total Grants awarded:		£ 3,125.00

Where our funds are held

❑ Net Current Assets

Funds readily available to KWPC held in bank accounts or similar.

Recommended target net assets are 50% of annual expenditure

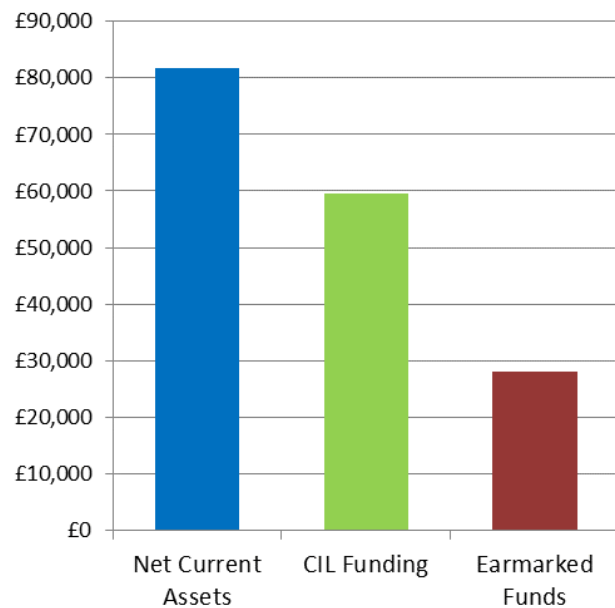
❑ CIL Funding

Funds held by Winchester City Council which are a result of Community Infrastructure Levy contributions from builders.

We can apply to use these for infrastructure projects that meet the criteria

❑ Earmarked Funds

Funds from developers to support the lifetime maintenance of areas notably Church Green.



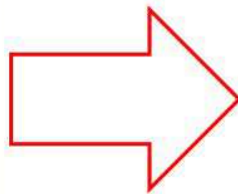
Planning & Highways

PFI Lighting Agreement



- All street lights have been updated with energy saving bulbs
- Lighting is dimmed between 23:00 – 05:00 to conserve energy
- A saving of £1619.00 has been made against the budget.

30mph Speed Limit on Springvale road



Speed Watch



Parking

